



INSTRUCTIONS: (FD-M2019S/L)

- Inspect product for shipping damage or manufacturing defects. If product is damaged, please contact us immediately at contact@valhallaoffroad.com. Do not discard packaging.

REQUIRED FOR INSTALL:

- 5/32" Hex Key
- 7/16" Wrench or Socket
- T40 Torx Driver
- 3x Tie Down Rings (FORD Part #KB3Z-21550A74-A, or 6x M8-1.25mm x 25mm Torx Bolts.

IN THE BOX:

- 1x M.A.P.S. Base Panel
- 1x M.A.P.S. Extension
- 1x Upper Bracket
- 1x Upper Bracket Clamp Plate
- 1x Lower Bracket
- 7x 1/4-20 x 1/2" Bolts
- 2x 1/4-20 Bolts x 1-3/4" Bolts
- 9x 1/4" Washers
- 2x 1/4-20 Lock Nuts



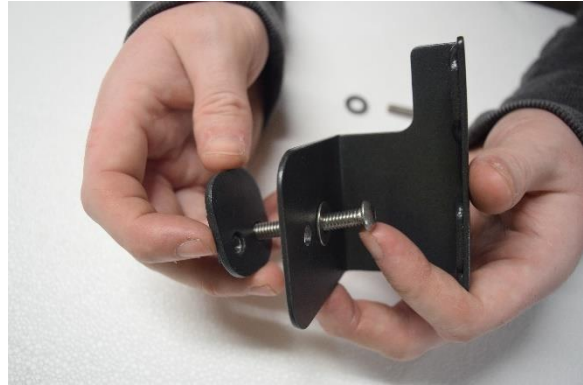
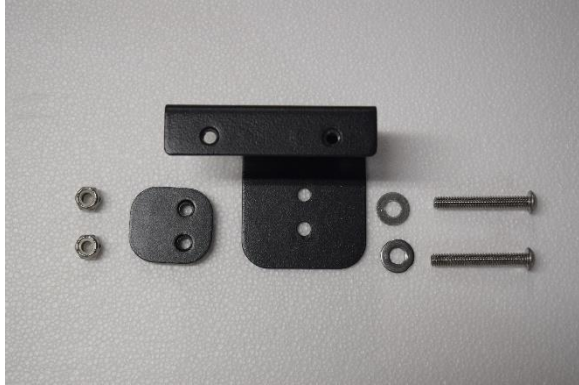
INSTALLATION:

1. Prepare truck for installation. Remove front, rear, and middle tie-down rings using T40 Torx Driver.



2. Pre-assemble upper clamp bracket.

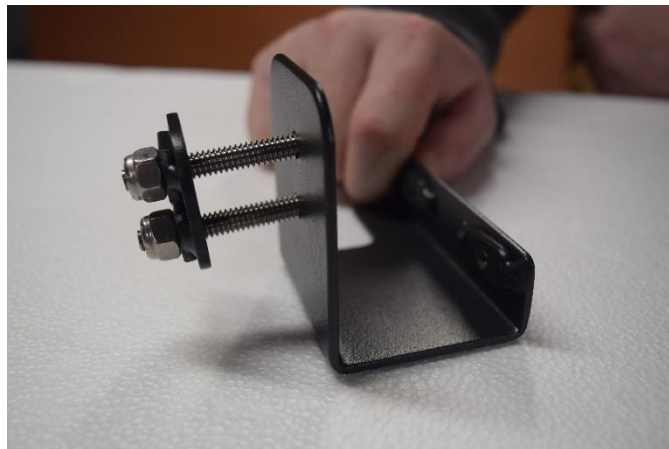
- a. Join upper bracket with clamp plate using $\frac{1}{4}$ -20 x 1-3/4" Screws and washers. Make sure clamp plate is facing up as shown in the picture. Thread both bolts $\frac{1}{2}$ " past back of clamp plate.



- b. Thread lock nuts on back of clamp plate. Tighten nuts so one full bolt thread is exposed past the end of the nut.



- c. Back off both $\frac{1}{4}$ -20 x 1-3/4 bolts until lock nuts are touching back of clamp plate.



3. Remove oval plug in opening closest to truck cab.



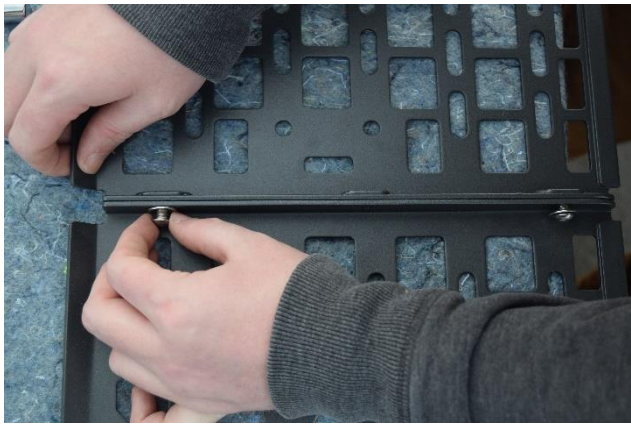
4. Insert upper clamp assembly into oval opening. Tighten bolts until bracket sits flush against bed of truck but can still slide freely.



5. Attach lower bracket to middle tie-down location, using tie-down from step 1. Place tie-down ring in front of bracket and thread Torx bolts into truck. Tighten bolts but leave loose.



6. Join base panel to extension using $\frac{1}{4}$ -20 x $\frac{1}{2}$ " screws and $\frac{1}{4}$ " washers. Tighten bolts firmly.



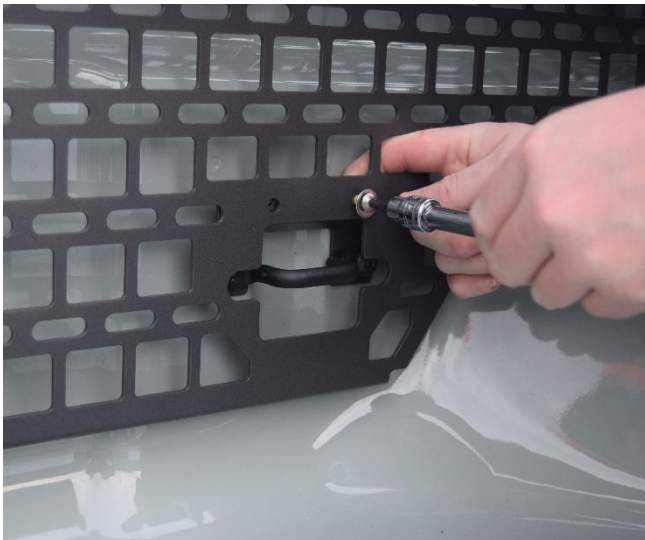
7. Place panel in position over wheel well. Using tie-down rings removed in Step 1, attach panel to truck at front and rear. Leave bolts loose.



8. Using ¼-20 x ½" screws and washers attach panel to upper bracket. Leave screws loose.



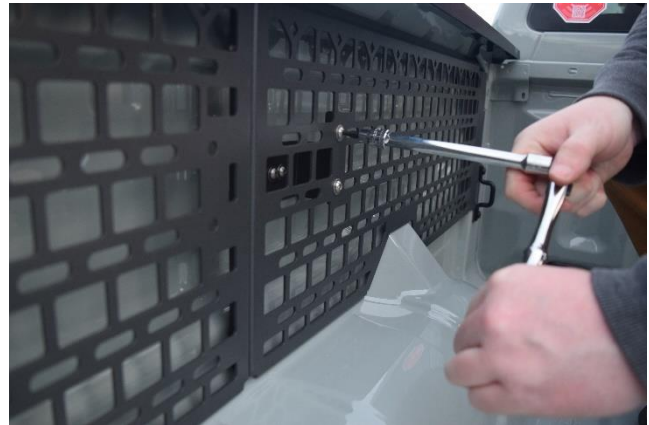
9. Using ¼-20 x ½" screws and washers attach panel to lower bracket. Leave screws loose.



10. Check panel is aligned vertically and spacing around wheel well is consistent. When aligned, firmly tighten all bolts. Start with front and rear tie-down bolts, then tighten upper and lower brackets.



Step 10 Continued....



11. Installation complete.

